




Bath cascade spout for wall mounting - Platinum

MEM

13 430 740



- 200mm projection
- cascade
- plate 180 mm x 60 mm
- hole diameter 40 mm
- 1/2" connection
- plug-link mounting
- max. flow 26.5 l/min at 3 bar flow pressure
- WRAS 1809017

	Platinum	13 430 740-08
	Chrome	13 430 740-00
	Brushed Platinum	13 430 740-06
	Dark Chrome	13 430 740-19
	Brushed Durabronze (23kt Gold)	13 430 740-28
	Matte Black	13 430 740-33
	Brushed Champagne (22kt Gold)	13 430 740-46
	Champagne (22kt Gold)	13 430 740-47
	Brushed Dark Platinum	13 430 740-99

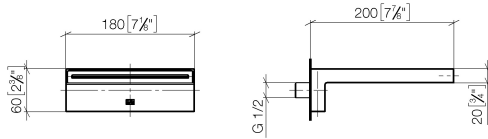
Recommended miscellaneous



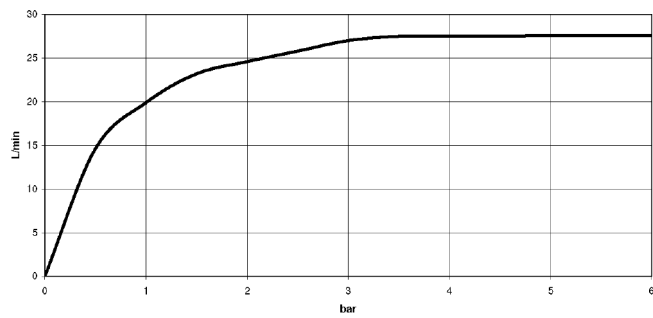
- Concealed wall elbow -** 35 085 970 90
- max. recess depth 163 mm
 - min. recess depth 90 mm

13 430 740

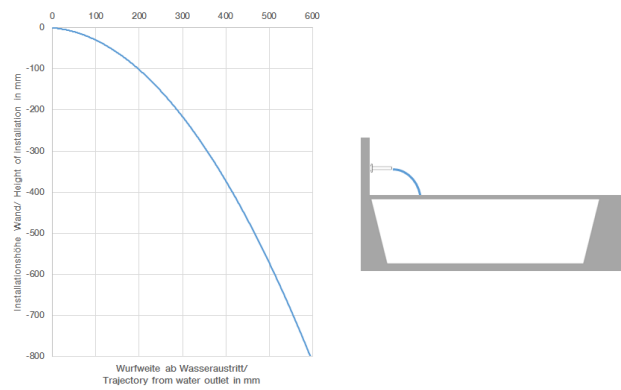
mm [inches]



Flow rate chart



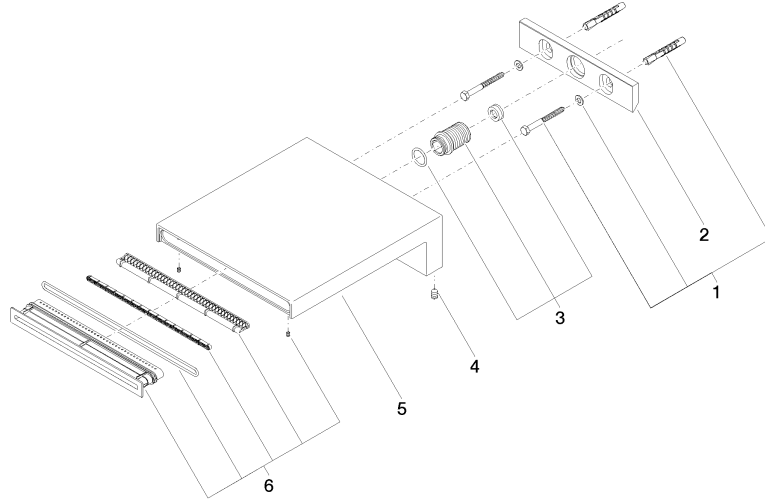
Trajectory diagram



Certificates

IAPMO_4976 (2). LGA_19258. WRAS_1809017.

13 430 740



Spare parts list

No.	Item Number	Name	Quantity used	Delivery time
1	04 30 31 014 00 90	fixing set	1	2
2	09 17 97 056 90	holder	1	2
3	90 24 05 008 00 90	nipple set	1	2
4	09 31 11 144 90	pin	2	2
5	09 11 74 042-08	spout	1	40
6	90 29 03 059 00 90	insert	1	2